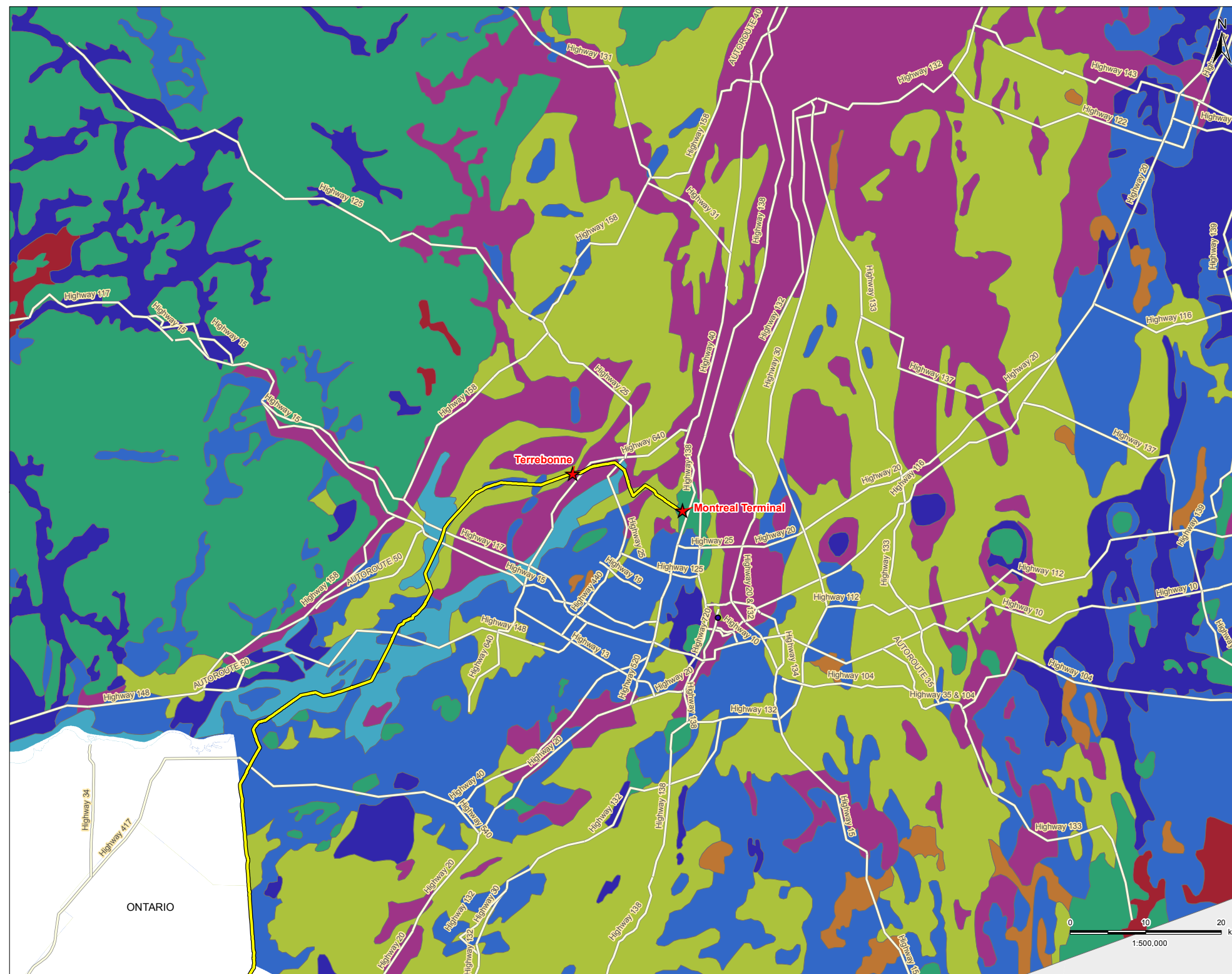


Anglais	Français
LINE 9B REVERSAL	INVERSION DE LA CANALISATION 9B
ATTACHMENT 7 Page 1 of 1	ANNEXE 7 Page 1 de 1
Legends	Légende
Major City	Ville d'importance
Site Location	Emplacement de site
Approximate Enbridge Centerline	Canalisation centrale approximative d'Enbridge
Major Road	Route importante
Surficial Geology	Géologie de surface
Alluvial terraces, post glacial	Terrasse alluviale, post-glaciaire
Bog, wetland	Tourbière oligotrophe, terres humides
Erosional alluvial terraces, post glacial	Beine d'érosion alluviale, post-glaciaire
Ice contact sand and gravel	Sable et gravier de contact glaciaire
Lacustrine deposits	Dépôt lacustre
Marine deposits	Dépôts marins
Moraine, Till	Moraine, till
Till, Veneer	Till, placage de sédiments
Notes	Notes
Coordinate system: Canada Lambert Conformal Conic	Système de coordonnées : projection conique conforme de Lambert
Base features produced under license with the Ontario Ministry of Natural Resources © Queen's Printer for Ontario, 2013.	Éléments de référence produits sous licence en collaboration avec le ministère des Ressources naturelles © Imprimeur de la Reine pour l'Ontario, 2013.
Chapman, L.J. and Putnam, D.F. 2007. Physiography of southern Ontario; Ontario Geological Survey, Miscellaneous Release-Data 228.	Chapman, L.J. et Putnam, D.F. 2007. Physiography of southern Ontario; Ontario Geological Survey, Publication diverse — Données 228.
April 2013	Avril 2013
Client/Project	Client ou projet
Enbridge Pipelines Inc. Line 9B Reversal	Enbridge Pipelines Inc. Inversion de la canalisation 9B
Figure No.	Figure n ^o
Title	Titre
Surficial Geology (Terrebonne to Montreal Terminal)	Géologie de surface (De Terrebonne au terminal de Montréal)
Revised: 2013-04-05 By: pworsell	Révisé le : 05-04-213 Par : pworsell



Legend

- Major City
- ★ Site Location
- Approximate Enbridge Centerline
- Major Road
- Surficial Geology**
- Alluvial terraces, post glacial
- Bog, wetland
- Erosional alluvial terraces, post glacial
- Ice contact sand and gravel
- Lacustrine deposits
- Marine deposits
- Moraine, Till
- Till, Veneer

Notes

1. Coordinate System: Canada Lambert Conformal Conic
2. Base features produced under license with the Ontario Ministry of Natural Resources © Queen's Printer for Ontario, 2013.
3. Chapman, L.J. and Putnam, D.F. 2007. Physiography of southern Ontario; Ontario Geological Survey, Miscellaneous Release-Data 228.



Stantec

April 2013
160950468

Client/Project
Enbridge Pipelines Inc.
Line 9B Reversal

Figure No.
4-11

Title
**Surficial Geology
(Terrebbonne to Montreal Terminal)**

Vcd1215-B1\Work_Group\1609\Active\160950468\planning\drawing\MXD\ESEIA_Figures_20120807\160950468_ESEIA_Fig4-11_SurficialGeology_Terrebbonne_Montreal.mxd
Revised: 2013-04-05 By: gworsell